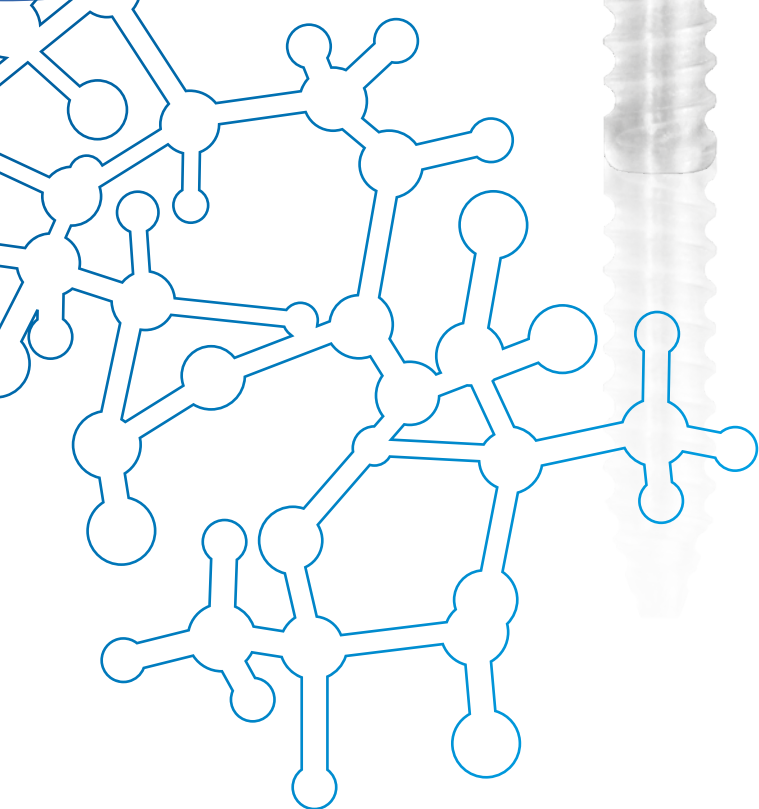




Choose

ActivaScrew™ Interference

for its unique
material properties.



Get better with ActivaScrew™ Interference

High Usability for
Various Indications

Implants that Do More

bioretec

Get better with ActivaScrew™ Interference

High Usability for Various Indications

1. Hand

- Thumb Caprometacarpal (CMC) Ligament Reconstruction

2. Elbow

- Medial Collateral Ligament (MCL) Reconstruction
- Lateral Collateral Ligament (LCL) Reconstruction

3. Shoulder

- Biceps Tenodesis

4. Knee

- Anterior Cruciate Ligament (ACL) Reconstruction
- Posterior Cruciate Ligament (PCL) Reconstruction
- Medial Patellofemoral Ligament (MPFL) Reconstruction

5. Foot and ankle

- Lateral Ankle Reconstruction
- Flexor Digitorum Longus (FDL) Tendon Transfer
- Flexor Hallucis Longus (FHL) Tendon Transfer
- Achilles Tendon



The ActivaScrew™ Interference bioabsorbable screws are constructed of bioabsorbable poly(L-lactide-co-glycolide) (PLGA).

ActivaScrew™ Interference
Patents: FI 124190. EP, US, FI Patent Pending

ActivaScrew™ Interference offers

- **HIGH USABILITY FOR VARIOUS INDICATIONS**

ActivaScrew™ Interference is indicated for fixation of tissue, including ligament or tendon to bone, or a bone-tendon to bone in the presence of appropriate immobilization/controlled mobilization. Interference fixation is appropriate for surgeries including but not limited to knee, shoulder, elbow, ankle, foot and hand/wrist.

- **WIDE SELECTION OF DIFFERENT SIZES**

Diameters of 4 - 11 mm and lengths from 10 - 33 mm.

- **EASY INSERTION ALONG THE GUIDE WIRE (K-WIRE)**

The ActivaScrew™ Interference is cannulated. It allows insertion of the screw over a guide wire (1.6 or 0.8 mm) facilitating screw placement.

- **EASY POSITION IMAGING DURING THE OPERATION**

- **CENTER DRIVEN TORX DRIVER FOR OPTIMAL INSERTION**

- **HIGH STRENGTH PROPERTIES OFFER EASY INSERTION AND SAFE MEDICAL USE**

High initial mechanical properties and isoelasticity of ActivaScrew™ Interference are created during the manufacturing of the product. These features increase the reliability of the screw in clinical use.

- **SELF-LOCKING SL™**

After operation, dimensions of ActivaScrew™ Interference slightly change improving screw's fit inside the tunnel and thus reducing the risk of an unstable fixation. The Self-Locking SL™ property is activated under hydrolytic conditions.

- **ISOELASTICITY**

The bending modulus of the ActivaScrew™ Interference is closer to the value of cortical bone compared to metallic implants.

- **MR SAFE**

Metallic implants are known to disturb MR imaging. Bioabsorbable materials are not magnetic and do not disturb MR imaging.

- **ENABLES DRILLING THROUGH THE PRODUCT IN NEED OF RE-OPERATION**

- **NO NEED FOR REMOVAL OPERATION**

- **IMPLANT IS SUPPLIED GAMMA STERILIZED**

It is safe, free of gas remnants and the risk of cross infection is reduced.



Example indications for ActivaScrew™ Interference

Anterior Cruciate Ligament (ACL) Reconstruction

Bioretec offers a wide selection of different screw sizes and easy to use instrumentation for knee ligament reconstruction. Self-Locking SL™ property and graft friendly design of ActivaScrew™ Interference increase the reliability of the screw in clinical use.

In anterior cruciate ligament (ACL) reconstruction, a cannulated Notcher (B-II-8010) can be used to prepare the insertion point for the screw into the femoral and tibial tunnels. Using a cannulated torx driver for a 7/8/9/10/11 mm interference screw (B-II-9031) the ActivaScrew™ Interference is picked up from the holder and inserted along the guide wire (e.g. B-II-1624B) into the tunnel.

Typically, 7 - 11 mm screws are used for ACL reconstruction.



Medial Patellofemoral Ligament (MPFL) Reconstruction

In addition to 7 - 11 mm interference screws, the Bioretec product range includes 4 - 6 mm interference screws for knee, shoulder, elbow, ankle, foot, hand and wrist surgery. Screws are cannulated and easy to use with a center driven Torx driver. Isoelasticity, Self-Locking SL™ and high strength properties enable easy insertion, safe medical use and good treatment results.

In case of medial patellofemoral ligament (MPFL) reconstruction a 4 - 5 mm ActivaScrew™ Interference can be used to fix a tendon graft onto the patella and 5 - 6 mm screws to fix a tendon graft onto the femur. 4 - 6 mm interference screws are inserted using a Torx shaft for 4/5/6 mm interference screw (B-II-9032). The Torx shaft is easy to attach to the large handle (B-ISC-9013) with quick coupling.



Lateral Ankle Reconstruction

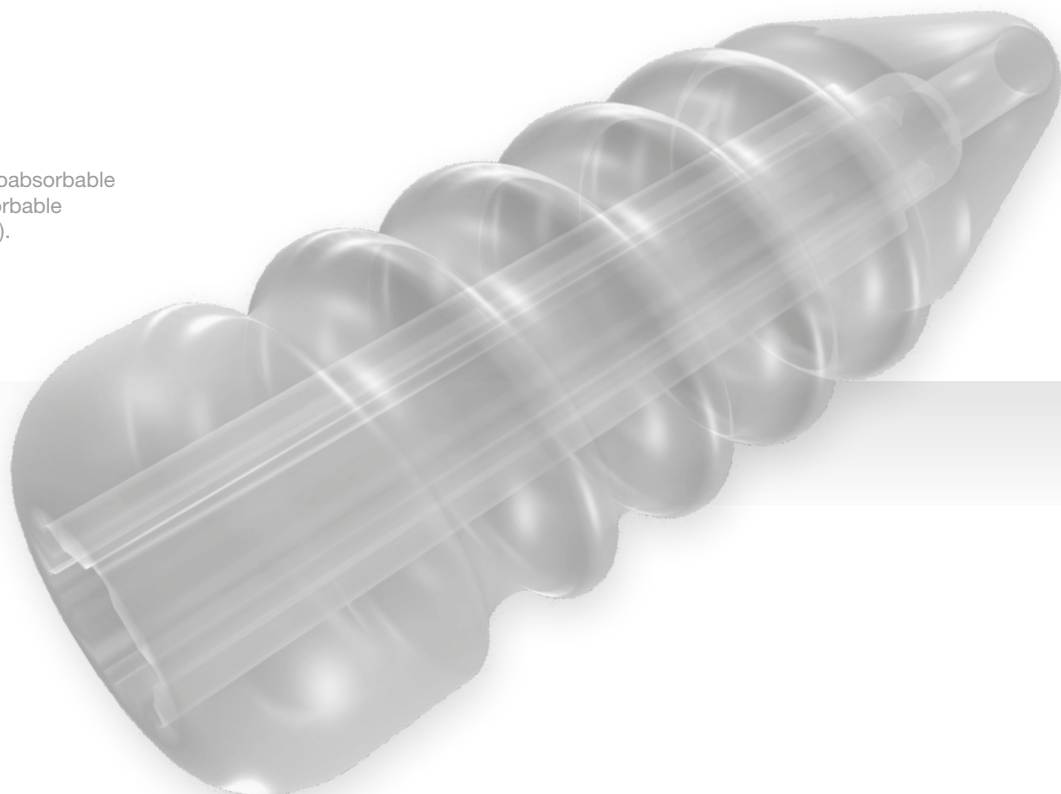
For lateral ankle reconstruction, 6 mm ActivaScrew™ Interference can be used to fix a tendon graft to achieve an anatomic reconstruction of the anterior talofibular and calcaneofibular ligaments in the ankle. A wide selection of different screw diameters and lengths enable you to choose the most suitable screw for the situation.

The ActivaScrew™ Interference delivery concept supports an aseptic way of working during the surgery. The ActivaScrew™ Interference is easy to pick up from the holder using a center driven Torx driver (B-II-9031, B-II-9032). The Torx driver extends through the length of the screw transmitting force throughout the screw making insertion of the screw easy and secure.



The ActivaScrew™ Interference bioabsorbable screws are constructed of bioabsorbable poly(L-lactide-co-glycolide) (PLGA).

ActivaScrew™ Interference
Patents: FI 124190. EP, US,
FI Patent Pending



ActivaScrew™ Interference product range

REMARK

Prior to using Bioretec Implants examine thoroughly the Instructions For Use - inside each product package.

ORDERING INFORMATION

For more information please contact your nearest distributor or our customer service at Sales@bioretec.com. Valid product range available from our website: www.bioretec.com.

Product range

Product Code	Description	Product Code	Description
B-AI-0410	ActivaScrew™ Interference 4 x 10 mm	B-AI-0820	ActivaScrew™ Interference 8 x 20 mm
B-AI-0415	ActivaScrew™ Interference 4 x 15 mm	B-AI-0824	ActivaScrew™ Interference 8 x 24 mm
B-AI-0420	ActivaScrew™ Interference 4 x 20 mm	B-AI-0828	ActivaScrew™ Interference 8 x 28 mm
B-AI-0510	ActivaScrew™ Interference 5 x 10 mm	B-AI-0830	ActivaScrew™ Interference 8 x 30 mm
B-AI-0515	ActivaScrew™ Interference 5 x 15 mm	B-AI-0833	ActivaScrew™ Interference 8 x 33 mm
B-AI-0520	ActivaScrew™ Interference 5 x 20 mm	B-AI-0920	ActivaScrew™ Interference 9 x 20 mm
B-AI-0615	ActivaScrew™ Interference 6 x 15 mm	B-AI-0924	ActivaScrew™ Interference 9 x 24 mm
B-AI-0620	ActivaScrew™ Interference 6 x 20 mm	B-AI-0928	ActivaScrew™ Interference 9 x 28 mm
B-AI-0626	ActivaScrew™ Interference 6 x 26 mm	B-AI-0930	ActivaScrew™ Interference 9 x 30 mm
B-AI-0720	ActivaScrew™ Interference 7 x 20 mm	B-AI-0933	ActivaScrew™ Interference 9 x 33 mm
B-AI-0724	ActivaScrew™ Interference 7 x 24 mm	B-AI-1024	ActivaScrew™ Interference 10 x 24 mm
B-AI-0726	ActivaScrew™ Interference 7 x 26 mm	B-AI-1028	ActivaScrew™ Interference 10 x 28 mm
B-AI-0730	ActivaScrew™ Interference 7 x 30 mm	B-AI-1030	ActivaScrew™ Interference 10 x 30 mm
		B-AI-1033	ActivaScrew™ Interference 10 x 33 mm
		B-AI-1128	ActivaScrew™ Interference 11 x 28 mm
		B-AI-1130	ActivaScrew™ Interference 11 x 30 mm
		B-AI-1133	ActivaScrew™ Interference 11 x 33 mm

ActivaScrew™ Interference Instruments

Product Code	Description
B-II-9032	Torx shaft for 4/5/6 mm interference screw with quick coupling
B-ISC-9013	Large handle, cannulated, quick coupling
B-II-9031	Torx driver for 7/8/9/10/11 mm interference screw
B-II-8010	Notcher for 7/8/9/10/11 mm interference screw
B-II-0815	K-wire Ø0.8 mm, length 150 mm, for 4/5/6 mm interference screw
B-II-0815B	K-wire Ø0.8 mm, length 150 mm, blunt ends, for 4/5/6 mm interference screw
B-II-0830B	K-wire Ø0.8 mm, length 300 mm, for 4/5/6 mm interference screw, blunt ends
B-II-1624	K-wire Ø1.6 mm, length 240 mm, for 7/8/9/10/11 mm interference screw
B-II-1624B	K-wire Ø1.6 mm, length 240 mm, blunt ends, for 7/8/9/10/11 mm interference screw
B-II-1630B	K-wire Ø1.6 mm, length 300 mm, for 7/8/9/10/11 mm interference screw, blunt ends
B-II-4000	Drill bit Ø4.0 mm, cannulated, for 4 mm interference screws, quick coupling
B-II-5000	Drill bit Ø5.0 mm, cannulated, for 5 mm interference screws, quick coupling
B-II-6000	Drill bit Ø6.0 mm, cannulated, for 6 mm interference screws, quick coupling
B-II-9000	Sterilization tray, for ActivaScrew™ Interference instruments
B-IIS-1000	ActivaScrew™ Interference Instrument Set

With Bioretec you do more than just a surgery.
You set **NEW STANDARDS.**

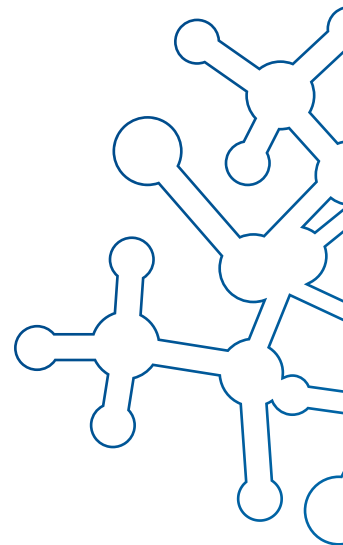




The Mission of Bioretec is to develop and bring into clinical use innovative bioabsorbable products and surgical solutions which improve patient outcome, user friendliness and cost-efficiency in clinical care.

Implants that do more – It's Bioretec

www.bioretec.com



bioretec

Manufacturer
Bioretec Ltd.
Hermiankatu 22,
FI-33720 Tampere, Finland
Tel. +358 20 778 9500
sales@bioretec.com
www.bioretec.com

Distributor



www.athrotech.com
Email : info@athrotech.com | Phone : +6012 486 8445

Rev.3.0. Not valid in USA