

# 4K YKD-9210/YKD-9211 UHD Endoscope Camera System

Realize Your Vision  
Gather Your Thoughts



# One Camera- Multiple Usage

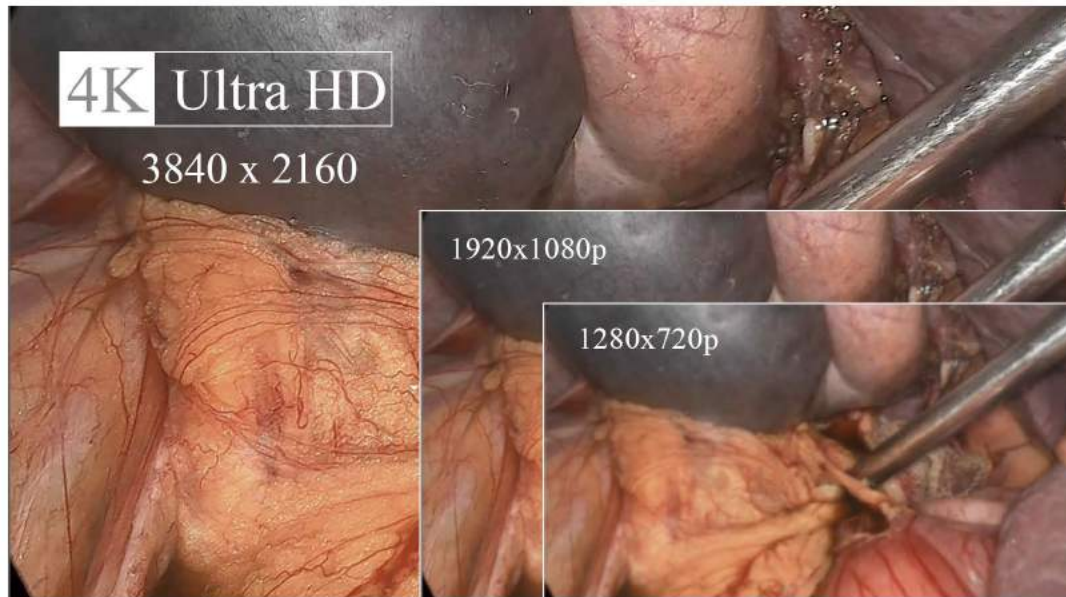


**YKD-9210/9211**

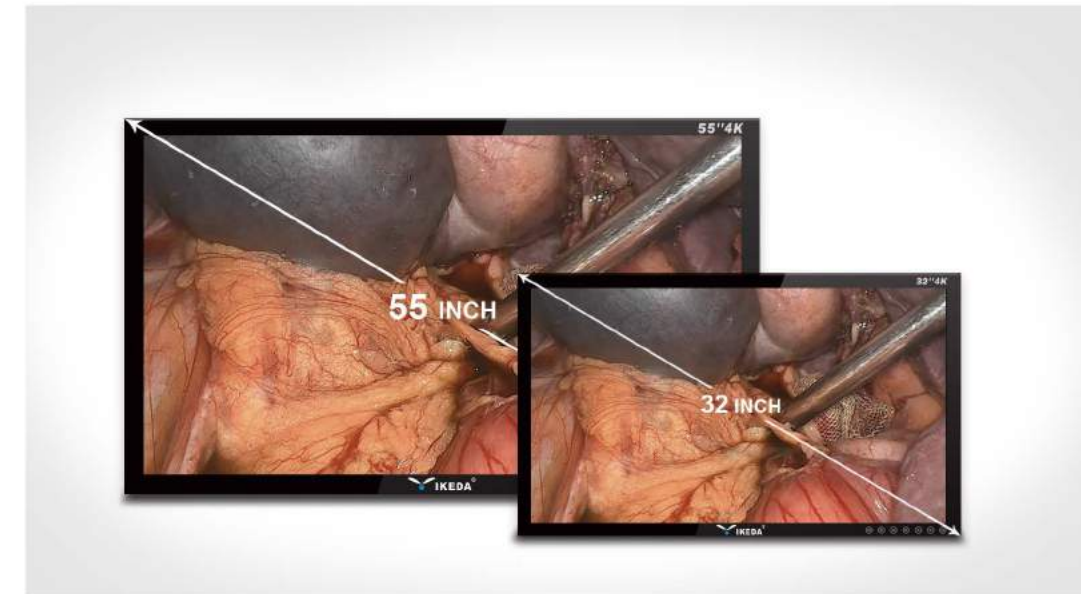
**4K UHD Medical Endoscope Camera System**

# Product Features

## 1 4K Ultra HD definition



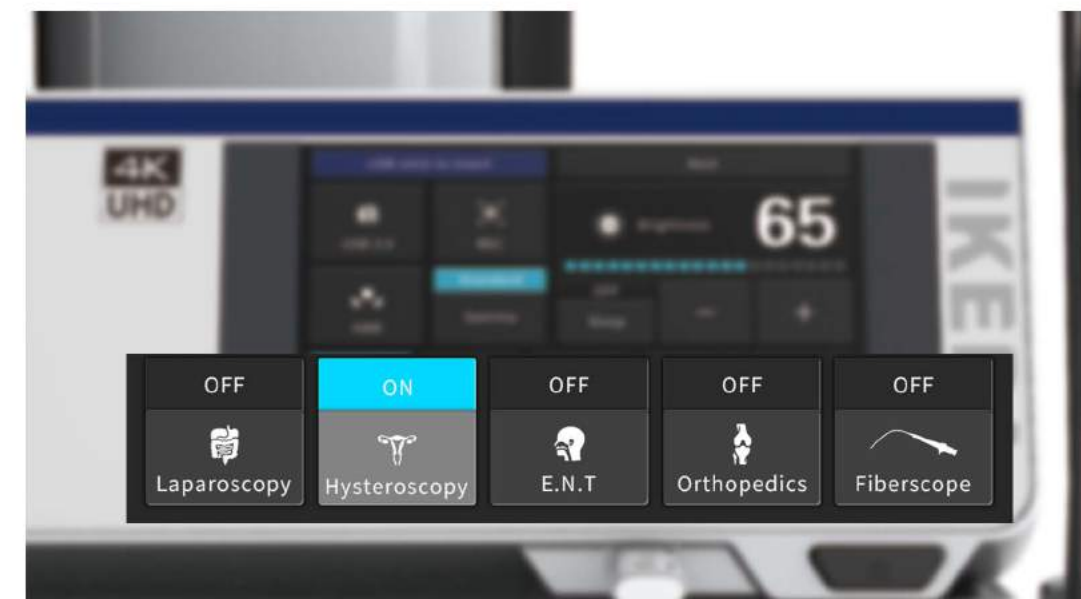
## 3 Large view filed and Large picture



## 2 Built-in USB storage



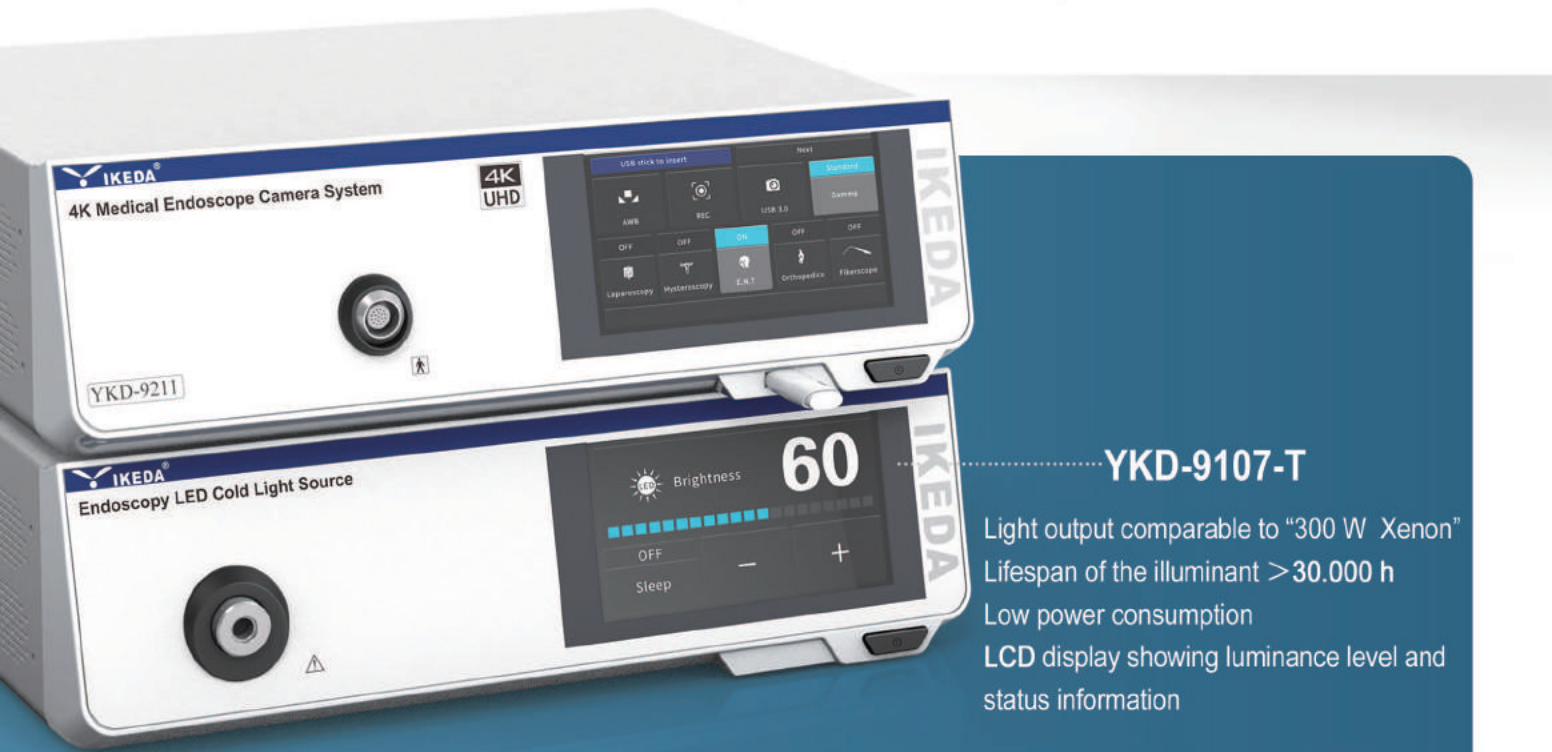
## 4 Five surgical procedure modes, one-key switching



# YKD-9211

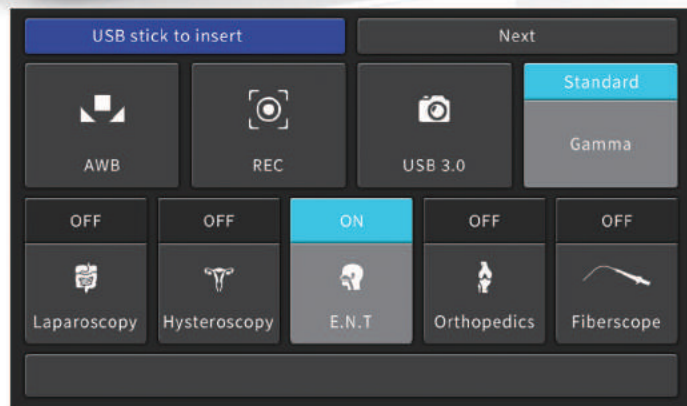
## 4K UHD Medical Endoscope Camera System

Arthrofix

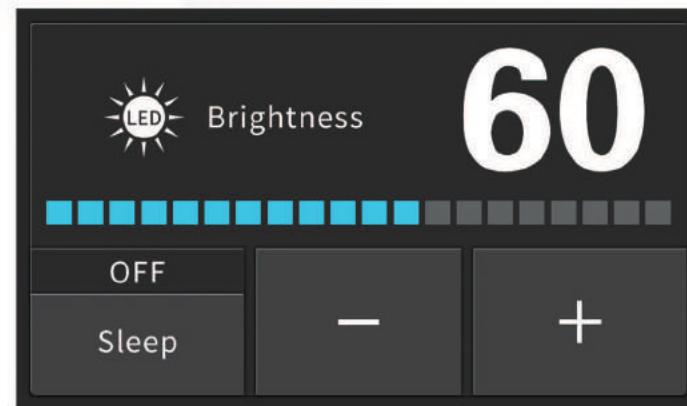


YKD-9107-T

Light output comparable to "300 W Xenon"  
 Lifespan of the illuminant > 30.000 h  
 Low power consumption  
 LCD display showing luminance level and status information



9211 main page



9107-T main page

## Product Features

- 4K UHD resolution
- Universal c-mount threading
- Image enhancement of colour and structure
- Multilingual menu, 7 inch touch screen
- Photo capture, Video recording, Zoom
- 5 USER Presets for surgical application

## Technical Data

<b>Camera head</b>	<ul style="list-style-type: none"> <li>· UHD imaging (3840 x 2160)</li> <li>· 1/2.5 inch SONY CMOS</li> <li>· IPX8 waterproof</li> </ul>
<b>Voltage range (current consumption)</b>	· 100-240 V (50 VA)
<b>Frequency</b>	· 50-60 Hz
<b>Device protection</b>	· 2x T3,15 A
<b>Video system</b>	<ul style="list-style-type: none"> <li>· Image resolution: UHD 3840 x 2160</li> <li>· Horizontal resolution: 1800 TVL</li> <li>· SNR: 50DB, Tolerance 20%</li> <li>· Scanning system: Progressive Scanning</li> <li>· White balance automatically</li> </ul>
<b>Screen size</b>	· 7 inch
<b>Recording (optional)</b>	<ul style="list-style-type: none"> <li>· Image format: JPG 1920 x 1080</li> <li>· Video format: Full HD 1920 x 1080; Mpeg-4 (H.264 Codec); Image rate 60fps</li> <li>· Connection: USB</li> </ul>
<b>Connections</b>	<p>Video out terminal:</p> <ul style="list-style-type: none"> <li>· 1x HDMI 2.0 (3840 x 2160)</li> <li>· 1x DVI</li> <li>· 1x 3G-SDI</li> </ul>
<b>Protection class (acc.to IEC 60601-1)</b>	· I
<b>Safety class</b>	· BF
<b>Standard</b>	· IEC 60601-1-2
<b>Device classification (EU) 2017/745, annex VIII</b>	· I
<b>Features</b>	<ul style="list-style-type: none"> <li>· White balance</li> <li>· Freeze function</li> <li>· Zoom in/Zoom out</li> <li>· Touch Buttons/Touch Screen</li> <li>· USB storage</li> <li>· Photo capture/Video recording</li> </ul>
<b>Language</b>	· Chinese/English/Japanese/Korean/Spanish/German/Russian
<b>Dimensions</b>	· 461(L)x353(W)x190(H)
<b>Weight</b>	· 6KG

# YKD-9211

## 4K UHD Endoscopy Solution



### ■ 4K 55 Inch Monitor

55" / 32"  
CE/ROHS/FCC CERTIFIED  
Anti-Glare  
Full-laminated

### ■ 4K Zoom Coupler

4K resolution  
Stable Clarity After Focusing

### ■ 4K Camera

4K IPX-8 waterproof grade  
User-Definable : Photo Capture/Video Recording/  
Zoom in/Zoom Out/White Balance

### ■ YKD-9211

### ■ YKD-9107-T

80W LED Cold Light Source

### ■ YKD-2100

6000 Series Aluminum Alloy  
Electrostatic Adsorption Coating  
Cable Management Box  
Adjustable Layer Height  
4" Universal Silent Castors

# Arthrofix

## Recommended collocation

### Programme 1

Equipped with  
4K 55 inch monitor



### Programme 2

Equipped with  
4K 32 inch monitor



## Laparoscopes

- Ultra High-resolution images compatible with 4K camera system
- Scratch-resistant sapphire lens
- Fog reduction function
- Autoclavable lens
- Compatible with third-party optical fiber cables

Wolf adapter, Storz adapter, ACMI adapter



## Product list

Video Processor	YKD-9211
LED Light source	YKD-9107-T
4K Monitor	YKD-8155/YKD-8132
Trolley	YKD-2100
4K Camera	
Endoscope	( Matching )